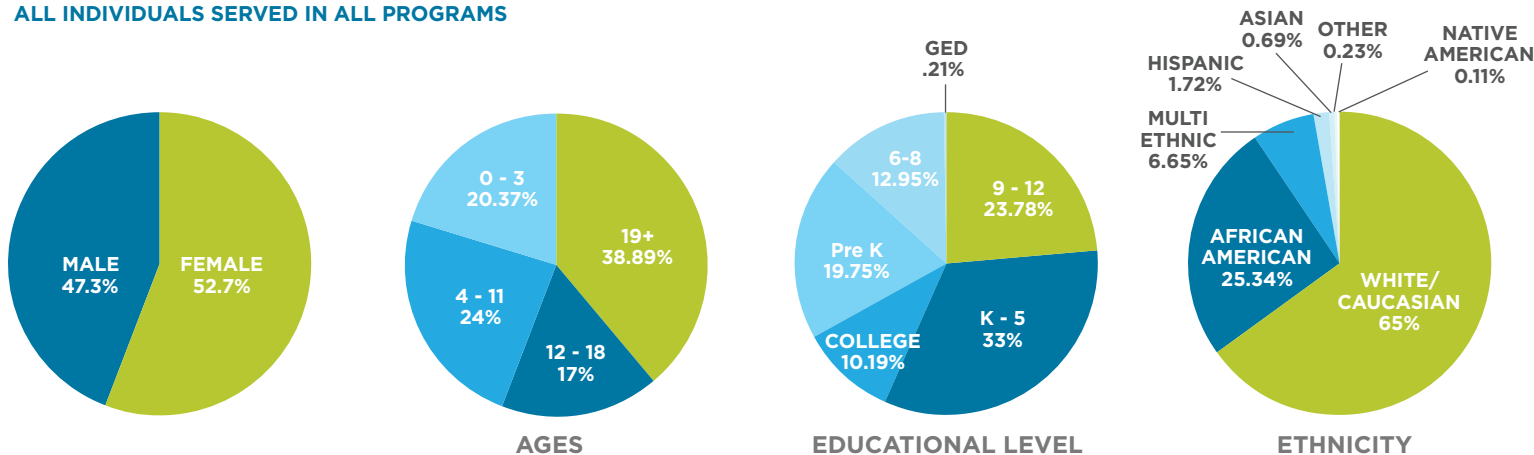


How UMCH Stacks Up

ALL INDIVIDUALS SERVED IN ALL PROGRAMS



2016 SERVICE BREAKDOWN

Children, youth, and parents served	1,029
Youth served in our group homes and transitional living programs	59
Children served through Florida foster care	94
Children served through our therapeutic foster care in Alabama	27
Families (representing 614 individuals) served in our FOCUS ministry (Family Preservation)	164
Families (representing 57 individuals) served by Adoption Serves	28
Individuals served in our higher education homes in Tuscaloosa and Florence	21
Individuals served through Crestview Teen center classes and mentoring program	157

UMCH served children, youth and families in 4 counties in Florida.

UMCH served children, youth and families in 28 counties in Alabama.

REVENUES TOTAL \$6,553,306*

\$1,181,328	United Methodist Churches - North Alabama and Alabama West Florida (18%)
\$1,060,237	Individual Contributions (16%)
Totals: \$2,241,565 Direct Public Support	
\$640,109	Alabama State Contracts (10%)
\$1,016,675	Medicaid (16%)
\$339,380	Florida State Contracts (5%)
Totals: \$1,996,164 Program Service Revenue	
\$2,315,577	Other Revenues (including rent, interest/investment income, programs) (35%)

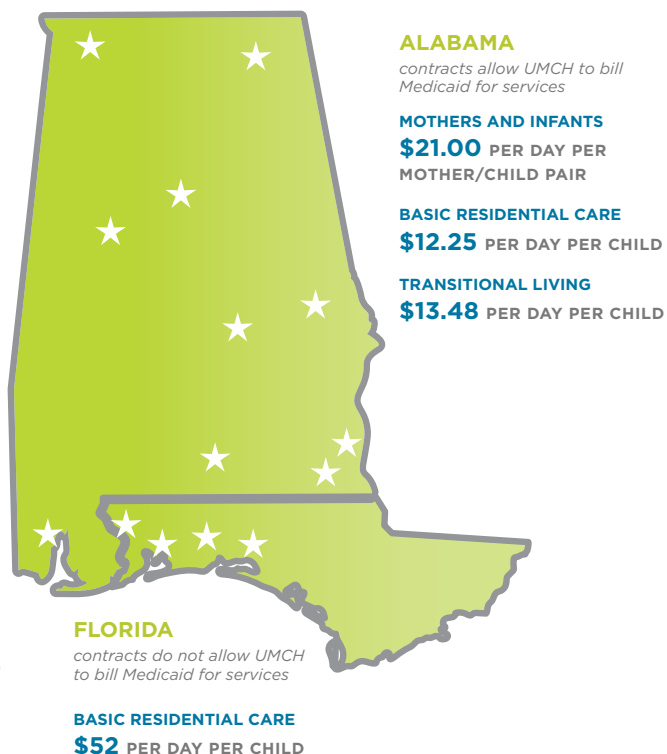
EXPENSES TOTAL \$5,844,315

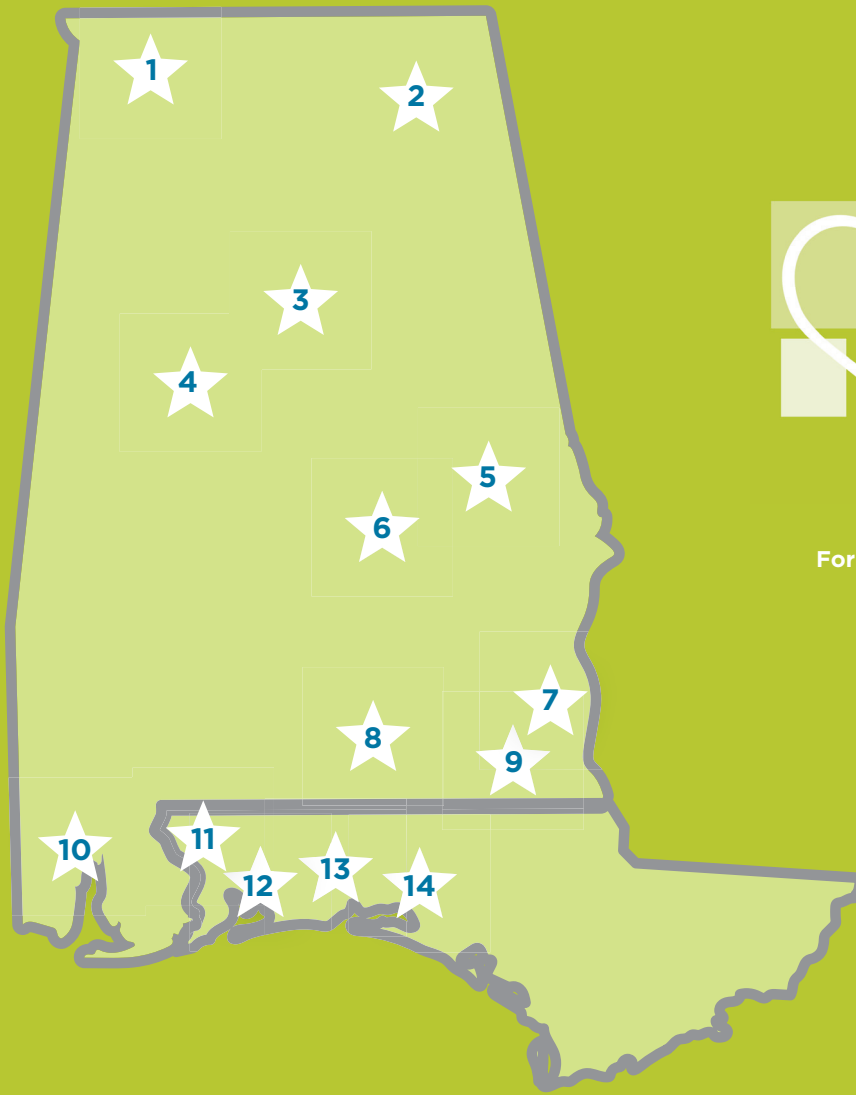
\$2,437,350	Residential Programs (42%)
\$1,937,971	Family Preservation, Foster Care, Adoptions (33%)
\$482,552	Supporting Services, Insurance, Property Management (8%)
\$571,199	Administration and Management (10%)**
\$415,243	Fundraising (7%)**

*Revenues substantially outpaced expenses in 2016 due to investment earnings on UMCH's endowment funds. UMCH normally spends 4.5% of a three-year average balance of its endowment to supplement the cost of caring for its children and programs.

**UMCH administrative and fundraising expense figures are in the generally accepted, if not exceptional, range as noted by www.charitynavigator.com.

REIMBURSEMENT FROM STATES





**UNITED
METHODIST
CHILDREN'S
HOME**

For information about planned giving, please
contact Rebecca Morris at
rebecca@umch.net or (205) 837-0141.

1	Florence, Alabama	Residential Higher Education Program
2	Scottsboro, Alabama	Girls Group Home
3	Birmingham, Alabama	Group Home and External Affairs Office
4	Tuscaloosa, Alabama	Residential Higher Education Program, Therapeutic Foster Care **, Transitional Living Program
5	Auburn, Alabama	Adoptions Office
6	Montgomery, Alabama	Headquarters Office
7	Headland, Alabama	Boys Group Home, Transitional Living Program
8	Andalusia, Alabama	FOCUS *, Therapeutic Foster Care **
9	Dothan, Alabama	FOCUS *, Therapeutic Foster Care **
10	Mobile, Alabama	Babies First Program and Transitional Living Program
11	Escambia County, Florida	FOCUS *, Florida Foster Care
12	Milton, Florida	FOCUS *, Girls Group Home, Florida Foster Care (Santa Rosa County), Florida Foster Care Office
13	Crestview, Florida	FOCUS *, Teen Center and Florida Foster Care (Okaloosa County)
14	Walton County, Florida	FOCUS *, Florida Foster Care

* FOCUS is a family preservation program where UMCH social workers provide short term intervention services to families at risk of losing their children or to families in the process of reunifying with foster youth

** Therapeutic Foster Care (TFC) services 100 mile radius around the UMCH offices. We currently have homes in the following counties: Barbour, Bibb, Bullock, Coee, Conecuh, Covington, Cullman, Dale, Escambia, Houston, Jeerson, Lamar, Marion, Pike, Tuscaloosa, and Walker